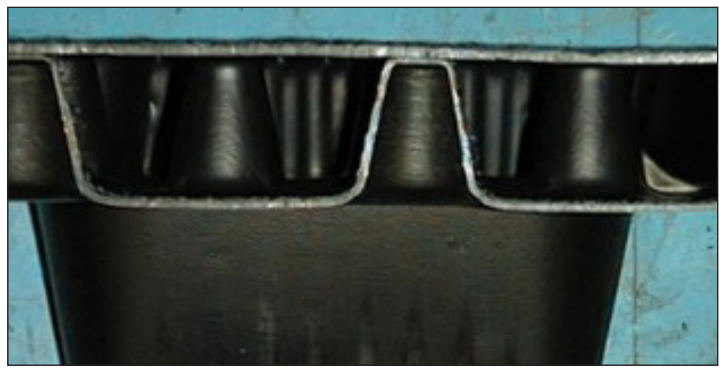
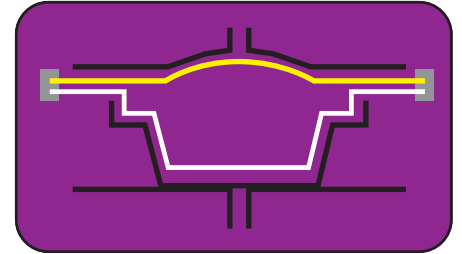


Twin Sheet Moulding

Mimtec

Mimtec form two sheets at once

- Two sheets moulded in one operation creating light but stiff parts
- Texture of tool face can be used to finish part surface
- Two different materials can be moulded
- Inserts such as grills can be moulded in



- Vacuum Forming • Pressure forming • Twin sheet moulding • 5 axis and 3 axis CNC cutting • Drape forming
- Heat bending • Fabrication and assembly • Design and CAD support • Tooling • Digital Printing • 3D Distortion

Telephone: 01329 225900 • www.mimtec.co.uk